

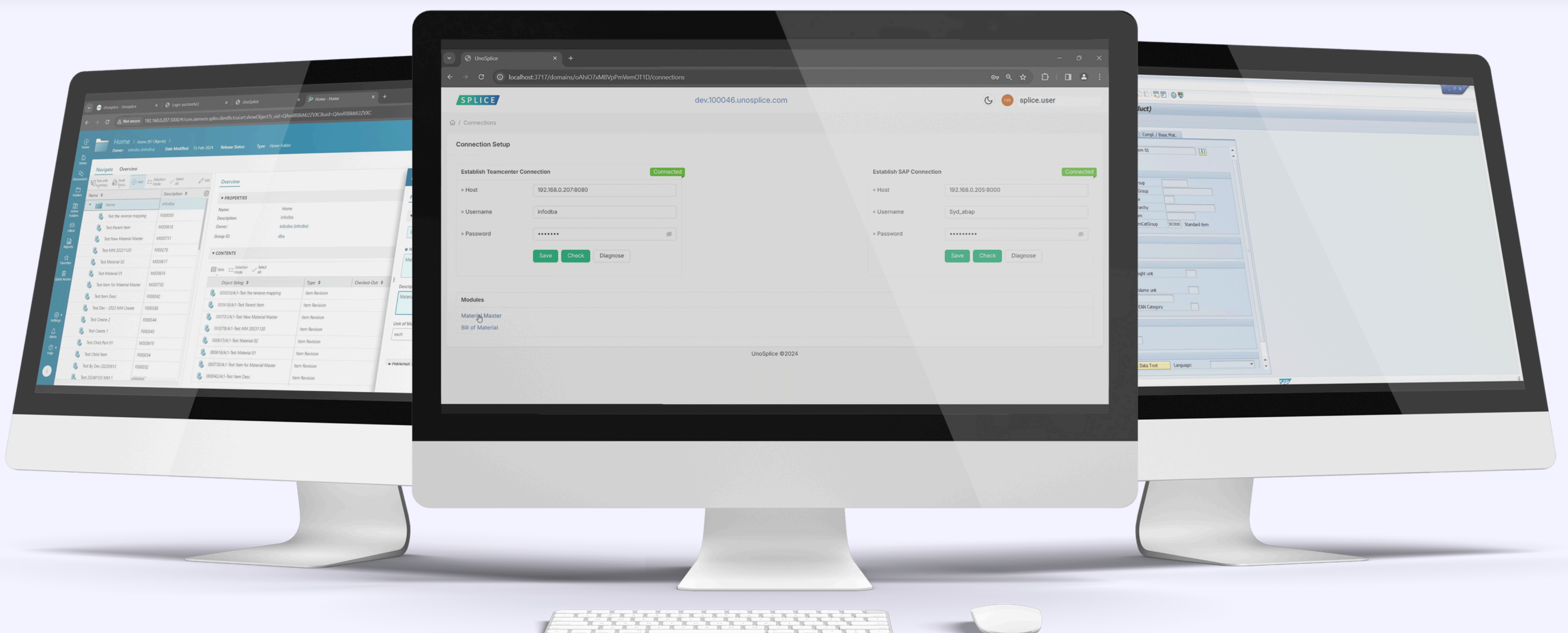
# SPLICE

## Simple, Intelligent & Rapid Integration of PLM & ERP

**Deploy & Go Live in just 6 days!\***

Splice is a groundbreaking solution designed to seamlessly integrate Teamcenter and SAP, two foundational systems driving modern enterprises.

With Splice, organizations can optimize data exchange and synchronize workflows between these critical platforms, fostering operational efficiency and accelerating digital transformation initiatives. Leveraging cutting-edge technology and industry expertise, Splice redefines integration, offering a comprehensive solution that streamlines processes and enhances collaboration across departments.



# WHAT MAKES US DIFFERENT

## Automated Mapping & Data Transformation:

AI dynamically identifies and maps fields between Teamcenter and SAP, eliminating manual effort and reducing errors in data synchronization.

## Simple Configuration - No Code:

Simple configuration is at your fingertips—no coding required. Easily set up and customize your integration effortlessly.

## Simple Maintenance - Fully Managed:

Experience simple maintenance—it's fully managed. Let us handle the complexities while you focus on your core business.

## Fast Integration - Immediate Deployment:

Splice promises rapid integration – go live swiftly, seamlessly connecting systems for instant efficiency.

## Fast Adaptation - Dynamic Configuration:

Splice ensures rapid adaptation—dynamic configuration for swift adjustments, keeping your integration agile and responsive.

## Smart Adaptability:

AI continuously learns from data and optimizes the integration workflow, enabling quicker adjustments to changes in business processes, ensuring a more agile and efficient system.

## Simple Deployment - Plug & Play:

Embrace simplicity in deployment—it's plug-and-play. Enjoy a straightforward integration process that saves time and resources.

## Simple Adaptation - Intuitive Interface:

Navigate simplicity in adaptation—an intuitive interface ensures user-friendly configurations. No steep learning curve, just straightforward integration.

## Fast Updates - Automated Enhancements:

Splice offers rapid updates—automated enhancements keep your integration efficient, ensuring you stay ahead effortlessly.

## Fast Monitoring - Proactive Maintenance:

Splice guarantees swift monitoring with real-time insights—detect and address issues proactively for a reliable, high-performance integration always.

## Use Cases:

Splice caters to various integration use cases across industries. For instance, organizations can streamline Product Lifecycle Management (PLM) processes by synchronizing design data from Teamcenter with procurement & manufacturing data in SAP. This ensures seamless collaboration & data exchange between design, procurement & manufacturing departments, leading to enhanced efficiency & productivity. Additionally, by synchronizing project schedules, resource allocations & task updates between Teamcenter & SAP, organizations can improve project management efficiency & ensure project delivery on time & within budget.

## Deployment Options:

- Cloud Deployment: Offers scalability, flexibility, and easy access to leverage cloud infrastructure for seamless integration.
- On-Premises Deployment: Provides enhanced control, data security, and compliance with regulatory requirements for data privacy and sovereignty.
- Hybrid Deployment: Combines cloud and on-premises deployment for a customized solution, offering flexibility, scalability, and control over data.

## Scalability and Performance:

Splice is designed to scale with the evolving needs of organizations while delivering optimal performance. Auto-expandable capabilities enable organizations to scale Splice effortlessly to accommodate growing data volumes and user demands, ensuring scalability and flexibility to support business growth and expansion. Performance optimization ensures that integration processes are optimized for maximum efficiency and minimal latency, ensuring optimal performance and responsiveness even under high loads and peak usage periods.

## Technical Specifications:

Splice offers robust technical specifications to meet the diverse needs of organizations. Compatible with various versions and configurations of Teamcenter and SAP systems, Splice ensures seamless integration across different environments. No additional hardware and software are required for deploying Splice, ensuring compatibility and optimal performance. Supported integration protocols and standards enable seamless data exchange between Teamcenter and SAP systems, ensuring interoperability and compatibility with existing systems. Robust security measures, including data encryption, access controls, and compliance with industry-specific standards, ensure the confidentiality, integrity, and availability of data exchanged between Teamcenter and SAP systems.

## Security and Compliance:

Security and compliance are paramount considerations for Splice. Data encryption is employed during transmission and storage to protect against unauthorized access and ensure data confidentiality and integrity. Splice adheres to industry-specific compliance standards, such as GDPR and HIPAA, ensuring data privacy and regulatory compliance for organizations operating in regulated industries.

# Splice vs The Rest

| Technical Aspect        | Manual                 | Custom                 | Off-the-Shelf                    | Splice                              |
|-------------------------|------------------------|------------------------|----------------------------------|-------------------------------------|
| Development Effort      | ● N/A                  | Extremely High         | High (Config + Scripting)        | ✓ No Code Configuration             |
| Upgrade Resilience      | ● Process Breaks ✓     | Very Low (High Rework) | Low-Moderate (Rework / Patches)  | ✓ High (Version-Agnostic by Design) |
| Data Model Adaptability | ● Manual Adjust        | Low (Code Changes)     | Moderate (Complex Configuration) | ✓ High (Dynamic, No TC side Deploy) |
| Maintenance Overhead    | ● High (Ongoing Labor) | Very High              | Moderate High                    | ✓ Low (Fully Managed Option)        |
| Skill Dependency        | ● General User         | Niche Developer        | Specialized Developer            | ✓ Integration Analyst / Power User  |
| Deployment Time         | ● NA                   | Months                 | Weeks-Months                     | ✓ Days (<1 week for Core)           |
| Monitoring / Alerting   | ● Manual               | Custom / None          | Basic                            | ✓ Intelligent / Managed             |

SPLICE is more than a connector- it's your strategic enabler!  
From engineering workflows to BOM transfers, SPLICE delivers speed, accuracy, and control across your enterprise.

### Why SPLICE NOW?

- ✓ Rapid deployment, minimal disruption
- ✓ Scalable, secure, and future-ready
- ✓ Seamless transition (existing to Splice)
- ✓ Fully managed - Zero expertise required

## Ready to elevate your Integration?

Contact Us

Manoj Banthia:  
+91 97697 23010  
manoj.banthia@unosplice.com

Nitish Jain:  
+91 99675 93554  
nitish.jain@unosplice.com

